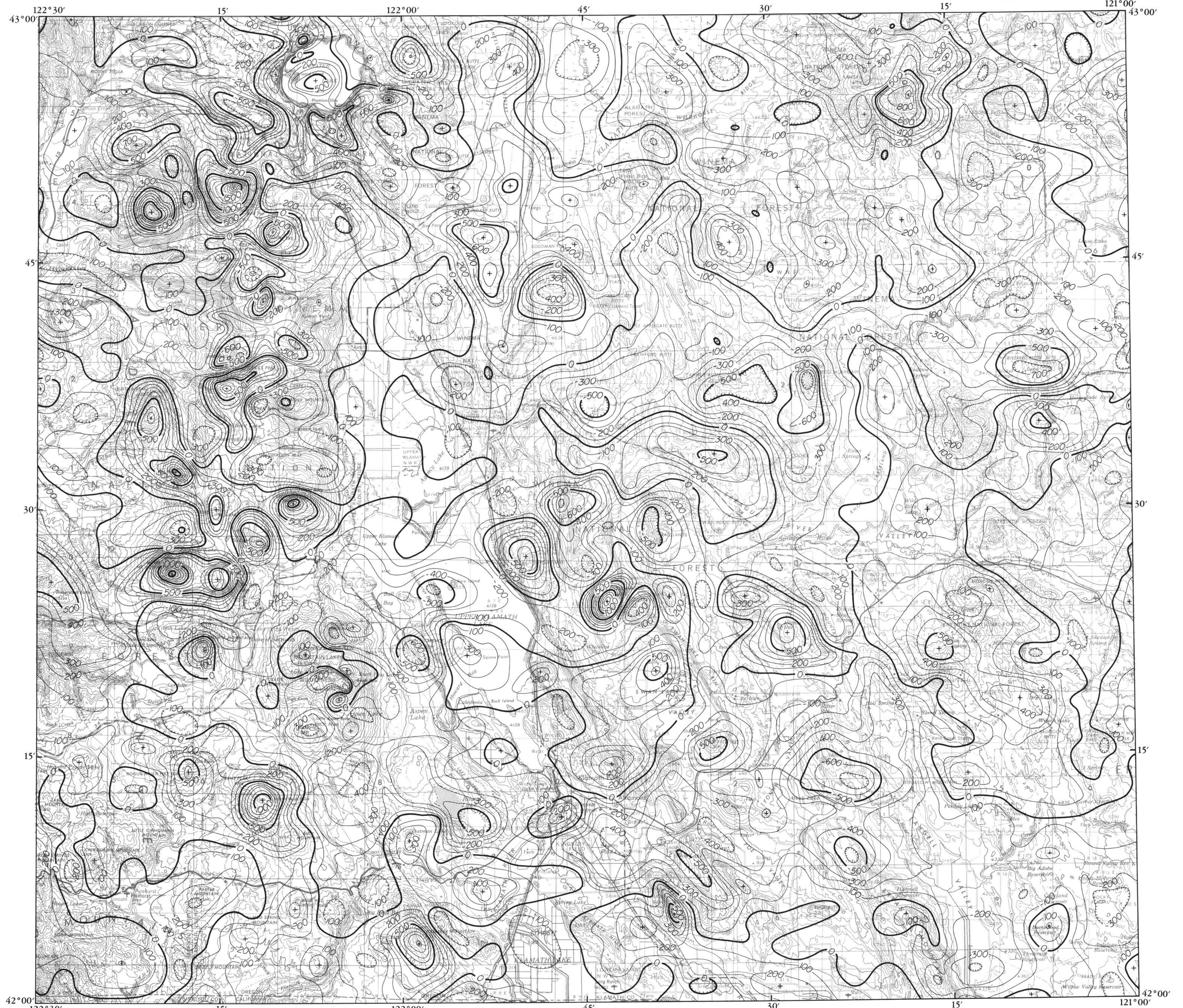


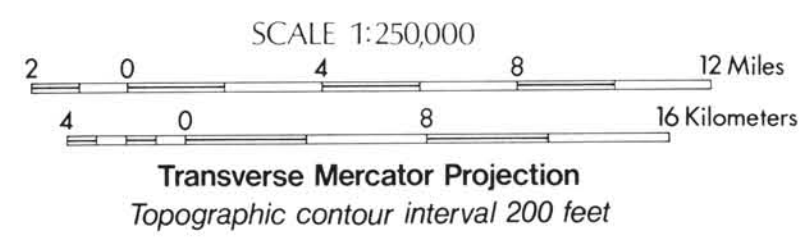
GMS 17

**TOTAL FIELD AEROMAGNETIC ANOMALY MAP**  
Cascade Mountain Range, Southern Oregon

STATE OF OREGON  
DEPARTMENT OF GEOLOGY AND MINERAL INDUSTRIES  
DONALD A. HULL, STATE GEOLOGIST



Contour interval 100 nanoteslas  
Estimated RMS uncertainty in  
measurements 4 nanoteslas  
IGRF (1975), modified  
Flight elevation 9,000 feet



Prepared by  
R.W. Couch, M. Gemperle, W.H. McLain, G.G. Connard

Data from  
Geophysics Group, OSU (1980)  
OREGON STATE UNIVERSITY  
December 1980

Total Field Aeromagnetic Anomaly:  
Southern Oregon Cascades